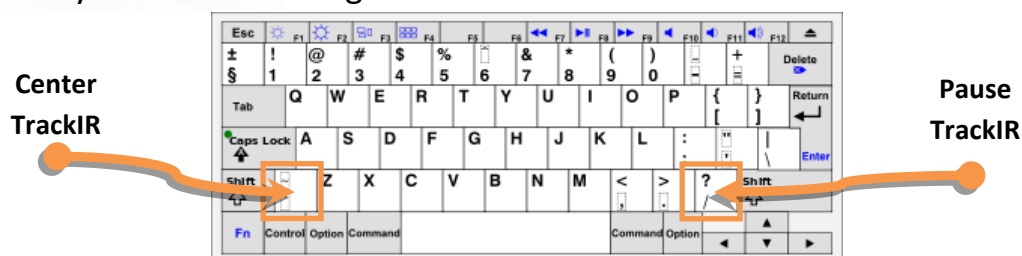


How to make the paddle switch a modifier

A modifier-switch on your joystick will allow you to at least double the number of actions on the stick. Even for the Flaming Cliffs 3 planes it is very useful.



For all of you that have assigned the TrackIR CENTER at the Paddle Switch, try this:



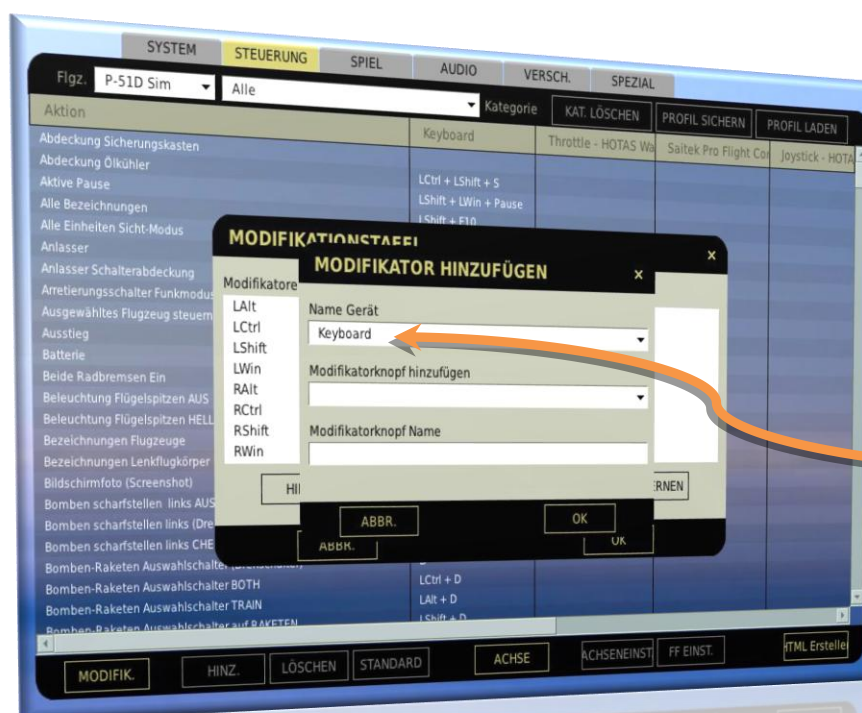


c)



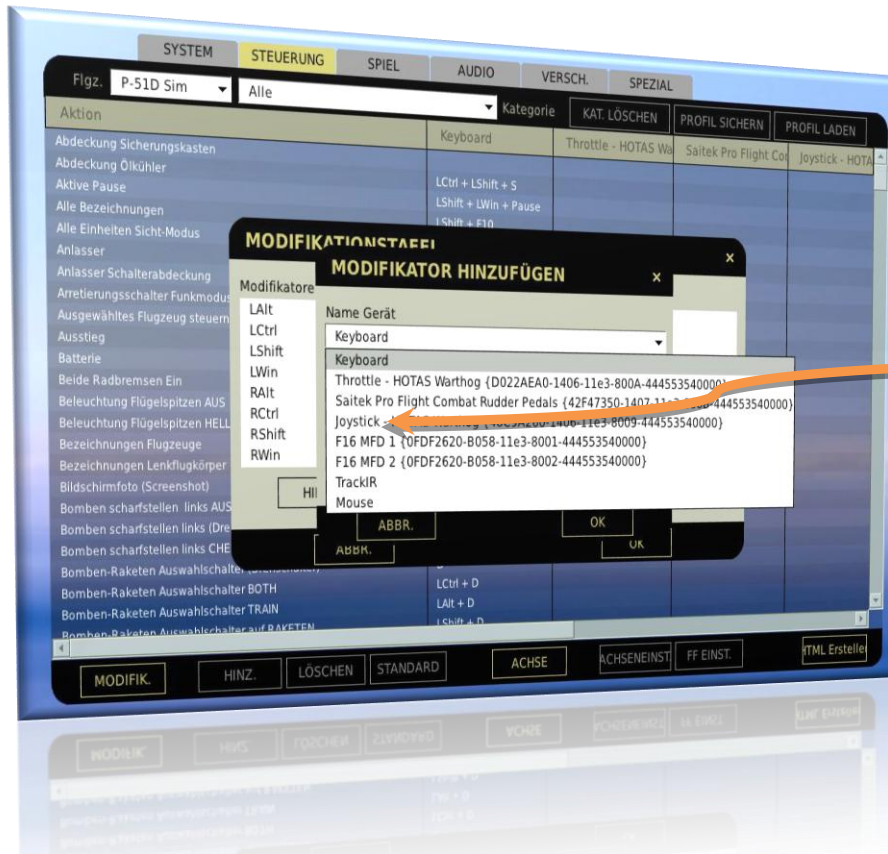
Klick on "ADD".

d)



You now see this screen. You have to choose a device in the upper line.

e)



Select the Stick.

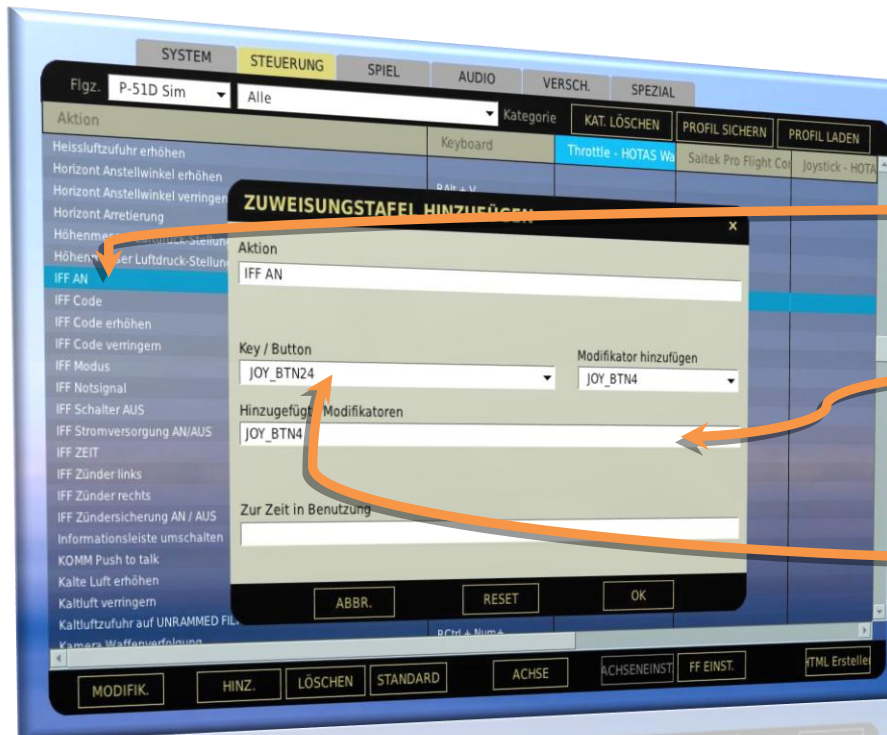
f)



Push the Paddle Switch.

Don't forget to rename the modifier.

g)



Now you can select any action of a particular layer, push the paddle-switch together with any other button of your stick.

h)



By doing so, it's possible to assign 2 actions on 1 Joystick-Button.